

FILEMAN 22.2

PART 1 OF THE FLAP PROJECT



Sam Habel
Larry Carlson “poo”
Linda Yaw
Carol Monahan
and
Flappy, currently a pterodactyl

what are the new features?

- PS: Most features come from MSC Fileman
- Screenman enhancements
- i18n/L10n
- Better Data Analysis Tools
- Enhanced Auditing
- Enhanced FIND and LIST^DIC DBS calls

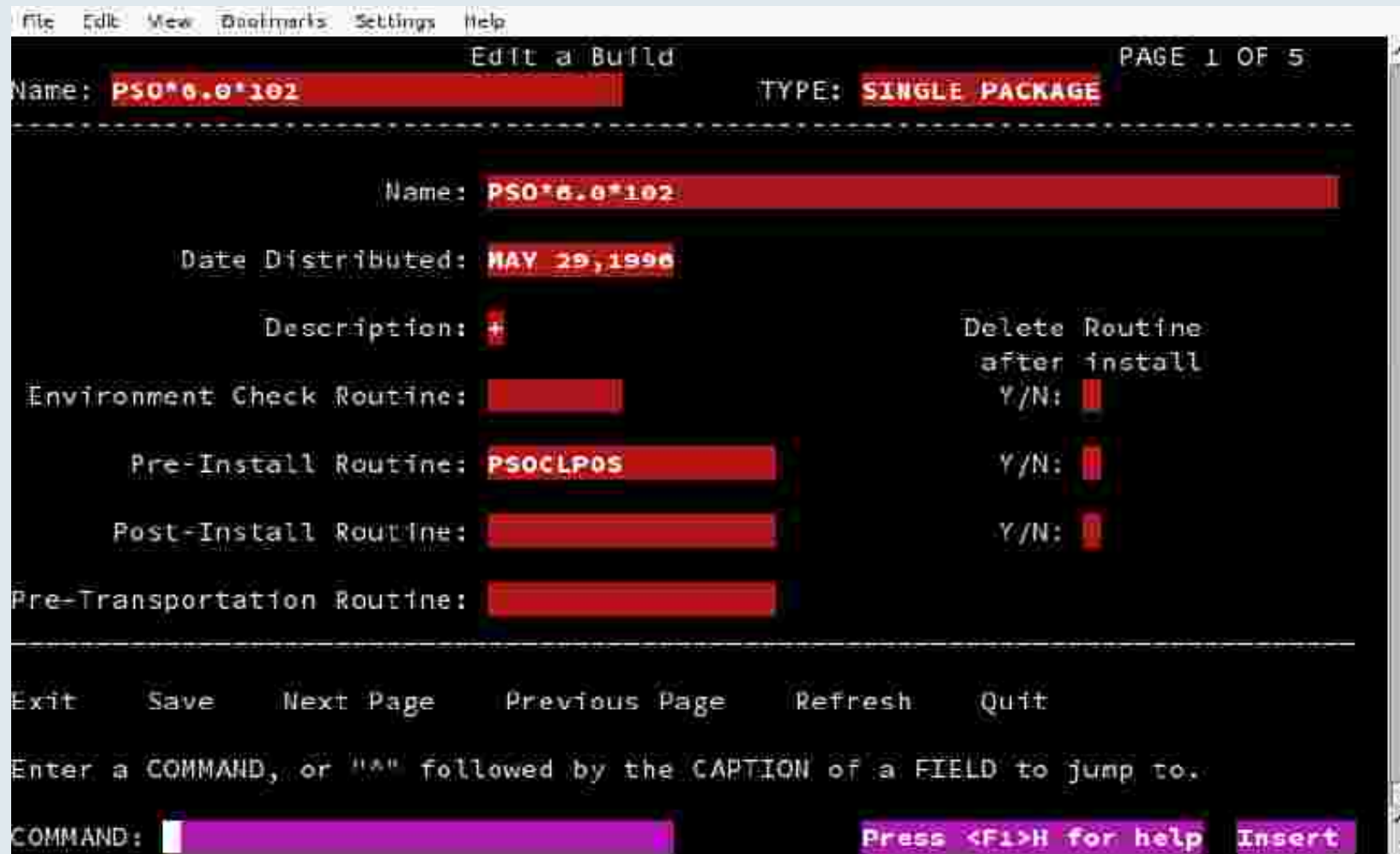
more new features...

- Data protection enhancements
- Expanded data storage
- Standalone version
- DIFROM enhancement
- Unit Tests

screenman enhancements

```
File Edit View Bookmarks Settings Help
Edit a Build PAGE 1 OF 5
Name: PS0*6.0*102 TYPE: SINGLE PACKAGE
-----
Name: PS0*6.0*102
Date Distributed: MAY 29,1998
Description: Delete Routine
              after install
Environment Check Routine: Y/N:
Pre-Install Routine: PS0CLPOS Y/N:
Post-Install Routine: Y/N:
Pre-Transportation Routine:
-----
Exit Save Next Page Refresh
Enter a command or '^' followed by a caption to jump to a specific field.
COMMAND:  Press <PF1>H for help 
```

screenman enhancements



i18n/l10n

- Fileman can now have data dictionary elements in any language and will display the correct language depending on the user's DUZ("LANG") value.
- Fileman handles dates consistently based on the value of the ^DD("DD") node.
- Fileman seamlessly handles all forms of non-US Dates using the "I" flag to %DT.
- Expanded Language File (^DMLAINIT)

improved data analysis tools

- Dangling pointer reporter (^DIVRPTR)
- Find pointers into files
- Improved Verify Fields option
- DD Comparer across UCIs

enhanced auditing capabilities

- WP fields can now be audited
- DD changes are now automatically audited
- New options to show changes done by a specific user and all changes to DD by date

enhanced find and list^dic

- Returned fields list can now return computed fields, including multiples and relational jumps
- “E” flag will now cause all output to be returned even if the data is erroneous.
- New 8th parameter to LIST^DIC will be invoked if “X” flag is supplied. Lets you use the print module to sort data.

computed return fields examples

- 5,, "@;.01;1;COUNT(COUNTY)
 - Get me the count of each of the county subfiles in the State File
- 9000010,, "@;.01;V
PROVIDER:PROVIDER"
 - Get me all providers for each visit I list.
 - Extra Credit: What kind of jump is this?

“e” flag

- Only works in special circumstances
 - Sex of Patient is “U”
 - Pointer to entry that doesn't exist
- Has no effect if input to Lister or Finder is incorrect.

print module integration with lister

- “X” flag.
- Can sort on un-indexed field:
 - D LIST^DIC(200,,.01,"X",,,,202.1)
- Filter using expression:
 - D LIST^DIC(50,, ".01;101", "XP",,,, "MESSAGE[""HOME MED""&(#.01[""VITAMIN""])"

print module integration (cont)

- By Sort Template:
 - D LIST^DIC(60,,.01,"XP",9,,,"[LR TEST DICTIONARY]")
- Several Parameters (BY variable)
 - D LIST^DIC(2,,.01,"XP",,,,,"YEAR(DOB),NAME")
- Down a multiple
 - D LIST^DIC(19,,.01,"XP",,,,,"10,.01")

silent creation of sort templates

- Bonus
 - BUILDNEW[^]DIBTED

data protection enhancements

- WP fields can now be uneditable
- Certain xrefs can now be made non-rerunnable

expanded data storage

- `^DD("STRING_LIMIT")`

misc

- Standalone Fileman Installation
- DIFROM Enhancements
- Unit Tests
 - DMUDDT000
 - DMUDDTC00
 - DMUDDIC00

where can i get it?

- Git repo:
<https://github.com/OSEHRA/fileman-22p2>
- RSA: curl this:
<https://github.com/OSEHRA/fileman-22p2/blob/master/VA-FILEMAN-22P2T1.RSA?raw=true>
- Install Guide:
<http://www.osehra.org/document/updated-install-guide-second-update-fileman-v222>

where can i get it? (cont)

- New version (Verification #1) coming out Feb 1st.

reviving the lost art of verification

- Verifying Fileman?????
 - XINDEX
 - Stress Testing
 - Unit Tests
 - Spell Checking thousands of words
 - Mumps fields checks
 - Checking documentation on every file/field
 - Checking on-line documentation
 - Testing all new features

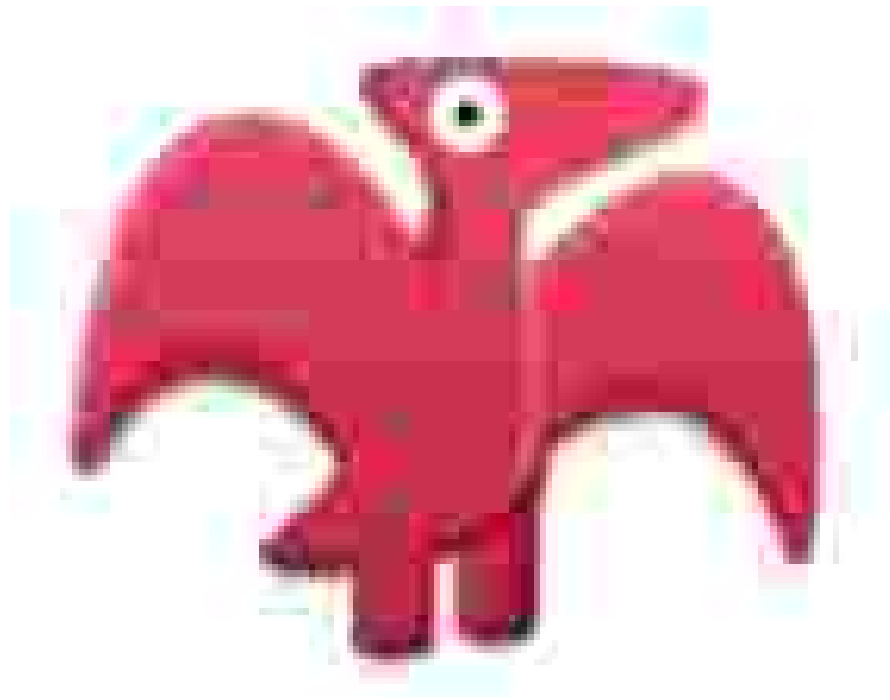
certification

- In progress
- OSEHRA Journal Article submission
- Unit Tests

whence the pterodactyl?

- Phase 2: Fileman 22.3 and Lab 5.3
 - Fileman 22.3 Features: Computed Pointers, Segregate MUMPS OS features, Virgin Install
 - Lab 5.3: Lab Code Convergence: Reunify Current Versions, Virgin Install
- Phases 3 & 4: Additional versions of both Fileman and Lab, building incrementally

the promise of evolution:



**YESTERDAY A DINOSAUR,
TOMORROW AN EAGLE!**